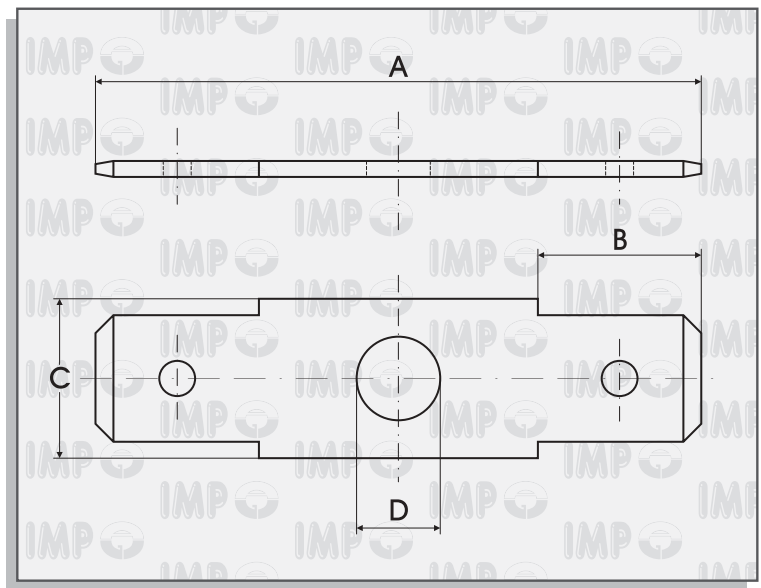

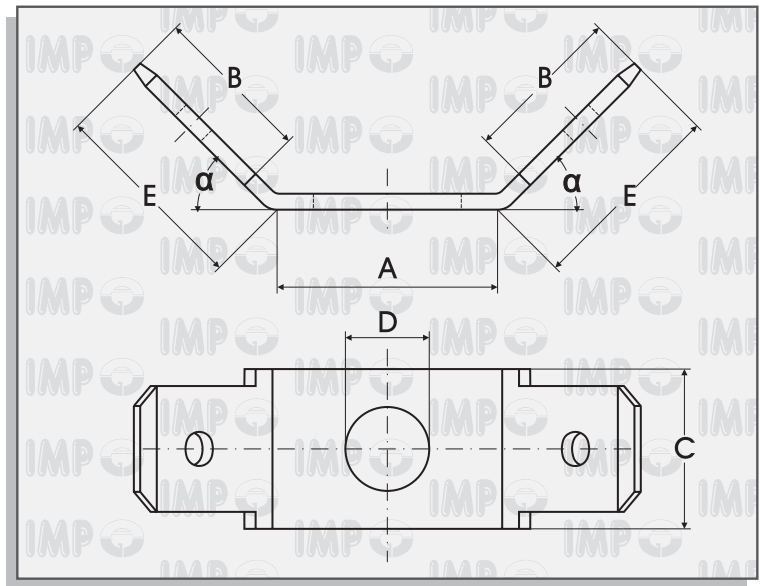



LINGUETTE DOPPIE	6.3 mm
DOUBLE TABS	6.3 mm
LANGUETTES DOUBLE	6.3 mm
DOPPELTE FLACHSTECKER	6.3 mm



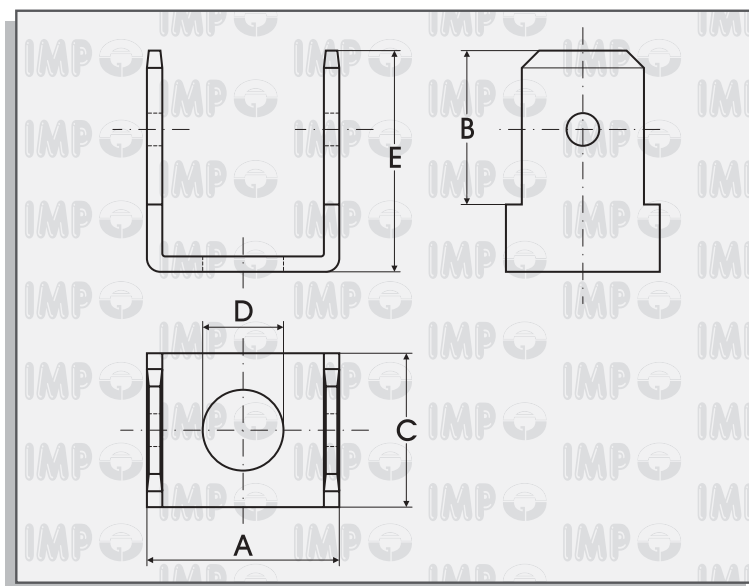
Spess.maschio Tab thick Epaisseur male Steckdicke mm	Spess.materiale Material thick Epaisseur matériel Material dicke mm	A	B	C	D	E	Codice - Part No. Code - Teile Nr.	Materiale Material Matériel Material
							Bag 5.000 Pcs. 	
0,80	0,80	30,4	8,0	8,0	2,7	-	002700.08.00	Cu Zn
							002700.08.01	Cu Zn gal Sn
0,80	0,80	30,4	8,0	8,0	3,2	-	003200.08.00	Cu Zn
							003200.08.01	Cu Zn gal Sn
0,80	0,80	30,4	8,0	8,0	4,2	-	004200.08.00	Cu Zn
							004200.08.01	Cu Zn gal Sn
0,80	0,80	30,4	8,0	8,0	5,2	-	005200.08.00	Cu Zn
							005200.08.01	Cu Zn gal Sn


LINGUETTE DOPPIE	6.3 mm
DOUBLE TABS	6.3 mm
LANGUETTES DOUBLE	6.3 mm
DOPPELTE FLACHSTECKER	6.3 mm



Spess.maschio Tab thick Epaisseur male Steckdicke mm	Spess.materiale Material thick Epaisseur matériel Material dicke mm	A	B	C	D	E	α	Codice - Part No. Code - Teile Nr.	Materiale Material Matériel Material
								Bag 5.000 Pcs. 	
0,80	0,80	11,5	8,0	8,0	2,7	10,0	45°	452745.08.00	Cu Zn
								452745.08.01	Cu Zn gal Sn
0,80	0,80	11,5	8,0	8,0	3,2	10,0	45°	453245.08.00	Cu Zn
								453245.08.01	Cu Zn gal Sn
0,80	0,80	11,5	8,0	8,0	4,2	10,0	45°	454245.08.00	Cu Zn
								454245.08.01	Cu Zn gal Sn
0,80	0,80	11,5	8,0	8,0	5,2	10,0	45°	455245.08.00	Cu Zn
								455245.08.01	Cu Zn gal Sn

LINGUETTE DOPPIE	6.3 mm
DOUBLE TABS	6.3 mm
LANGUETTES DOUBLE	6.3 mm
DOPPELTE FLACHSTECKER	6.3 mm



Spess.maschio Tab thick Epaisseur male Steckdicke mm	Spess.materiale Material thick Epaisseur matériel Material dicke mm	A	B	C	D	E	Codice - Part No. Code - Teile Nr.	Materiale Material Matériel Material
							Bag 5.000 Pcs. 	
0,80	0,80	10,0	8,0	8,0	2,7	11,5	902790.08.00	Cu Zn
							902790.08.01	Cu Zn gal Sn
0,80	0,80	10,0	8,0	8,0	3,2	11,5	903290.08.00	Cu Zn
							903290.08.01	Cu Zn gal Sn
0,80	0,80	10,0	8,0	8,0	4,2	11,5	904290.08.00	Cu Zn
							904290.08.01	Cu Zn gal Sn
0,80	0,80	10,0	8,0	8,0	5,2	11,5	905290.08.00	Cu Zn
							905290.08.01	Cu Zn gal Sn
0,80	0,80	12,3	8,0	8,0	2,7	10,5	902790BL.08.00	Cu Zn
							902790BL.08.01	Cu Zn gal Sn
0,80	0,80	12,3	8,0	8,0	3,2	10,5	903290BL.08.00	Cu Zn
							903290BL.08.01	Cu Zn gal Sn
0,80	0,80	12,3	8,0	8,0	4,2	10,5	904290BL.08.00	Cu Zn
							904290BL.08.01	Cu Zn gal Sn
0,80	0,80	12,3	8,0	8,0	5,2	10,5	905290BL.08.00	Cu Zn
							905290BL.08.01	Cu Zn gal Sn