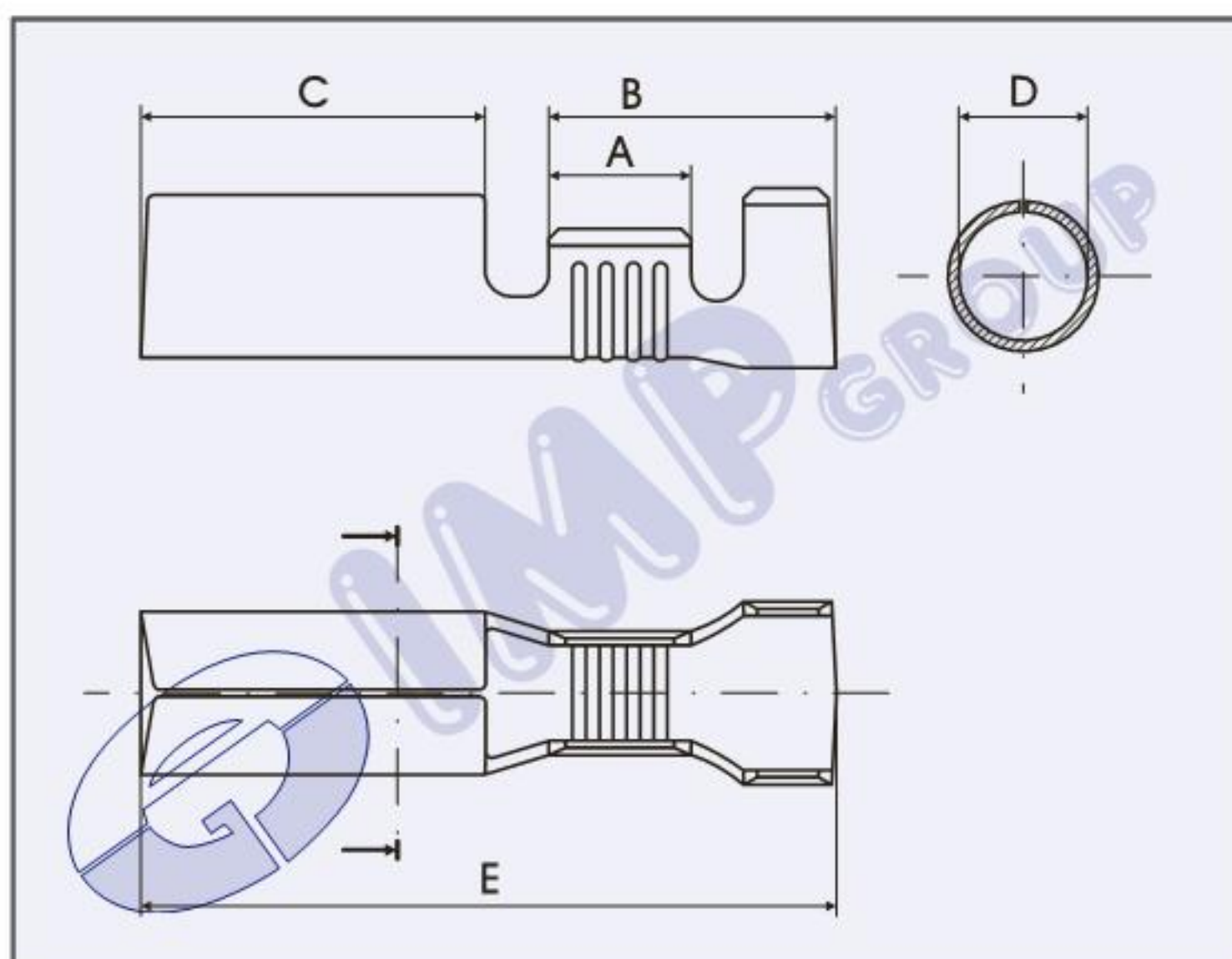


TERMINALI CILINDRICI FEMMINA
SOCKET TERMINALS
CLIPS CYLINDRIQUES
RUNDSTECKHÜLSEN


| Sezione cavo Wire range Section câble Nennquerschnitt mm² | Ø Isolante Ø Insulation Ø Gaine Ø Isol. mm | Spess. materiale Material thick Epaisseur matériel Material dicke mm | A | B | C | D | E | Codice - Part No Code - Teile Nr. | | Materiale Material Matériel Materiall |
|---|---|---|-----|-----|------|-----|------|--------------------------------------|--------------------|--|
| | | | | | | | | Bag 5.000 Pcs. | Reel 5.000 Pcs. | |
| 1 - 2,5 | 2,5 - 4,0 | 0,32 | 4,0 | 7,7 | 10,0 | 3,9 | 20,5 | 676.00.9 | 676.00.3 | Cu Zn |
| | | | | | | | | 676.01.9 | 676.01.3 | Cu Zn gal Sn |